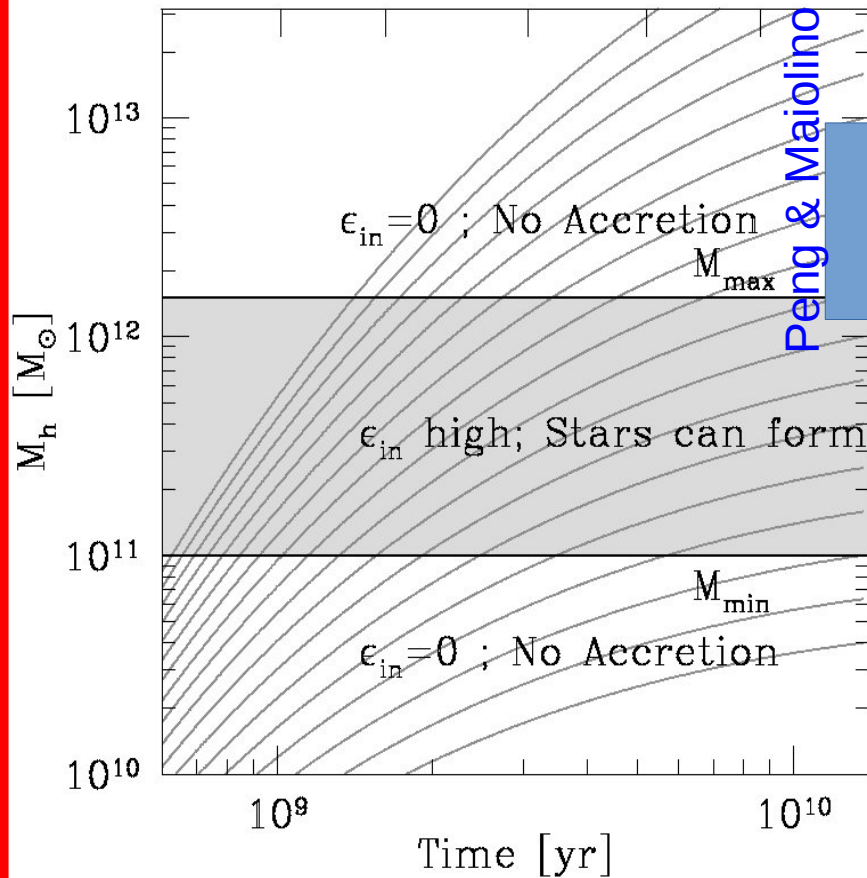


Cold accretion Efficiency

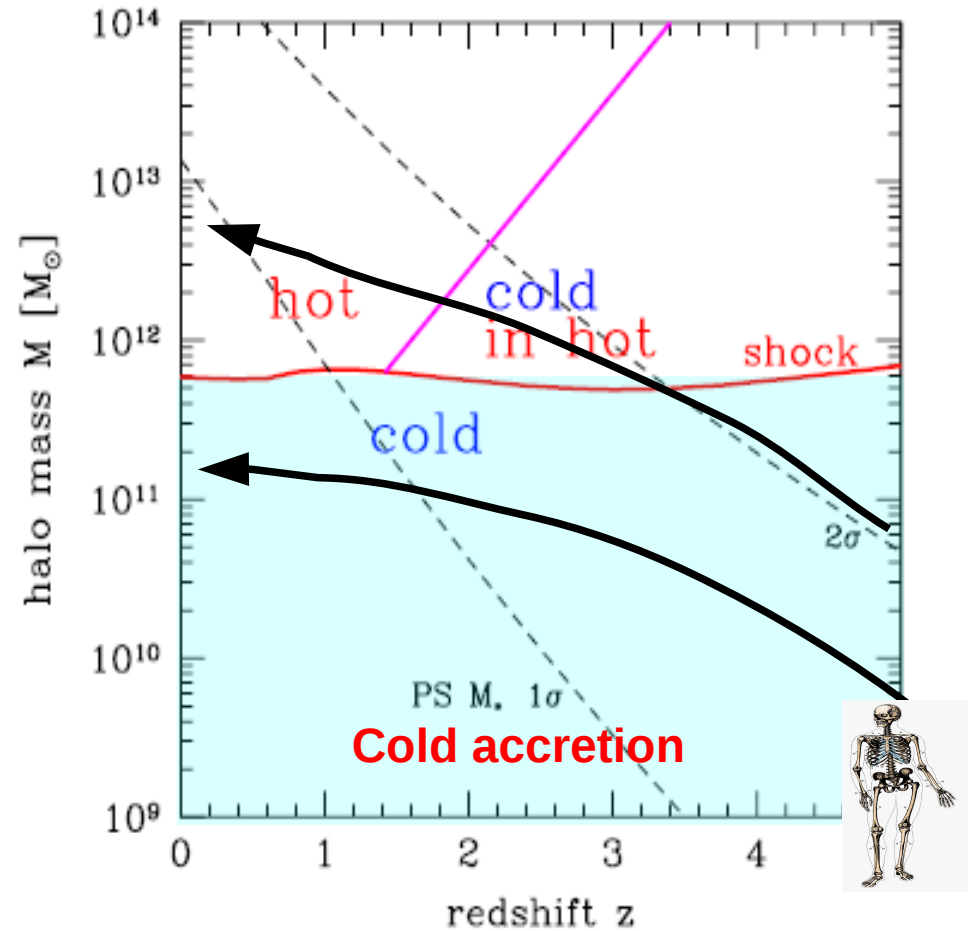
Bouché et al. 2010

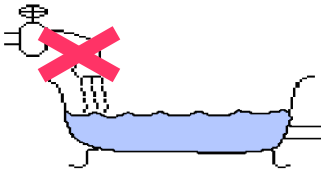
z

6 4 2.2 1.2 0.5



Dekel et al. 2006



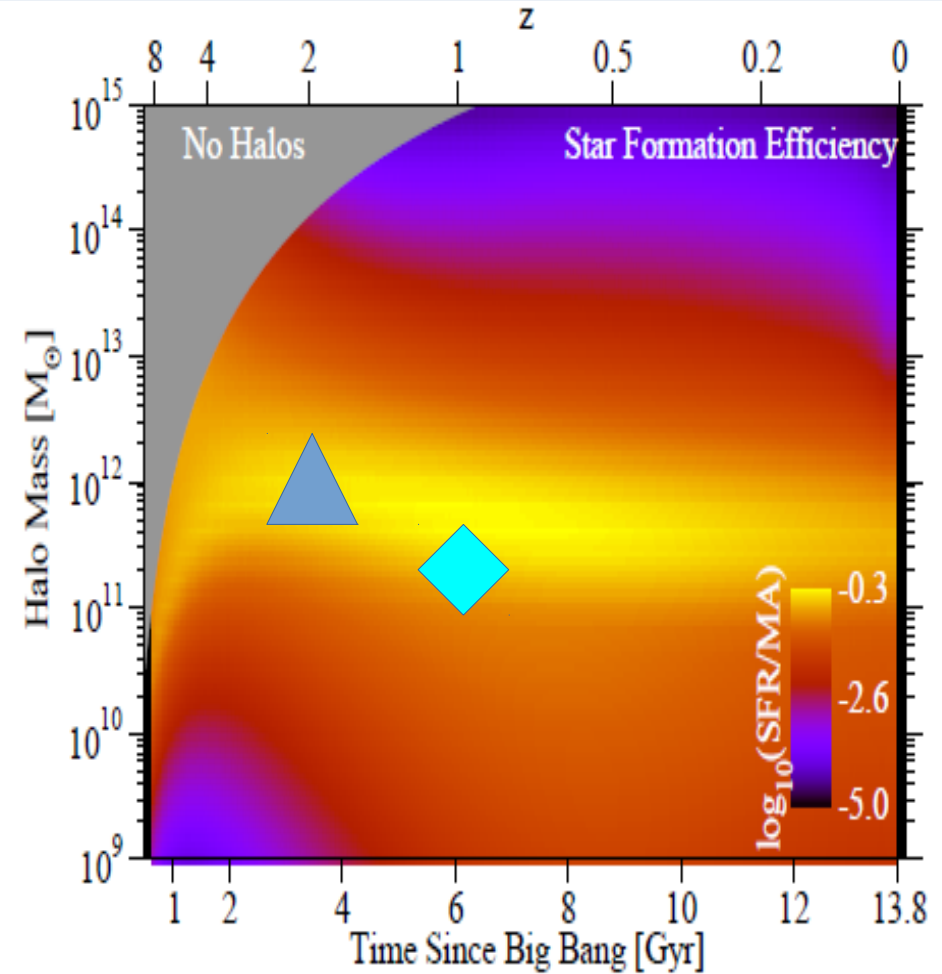
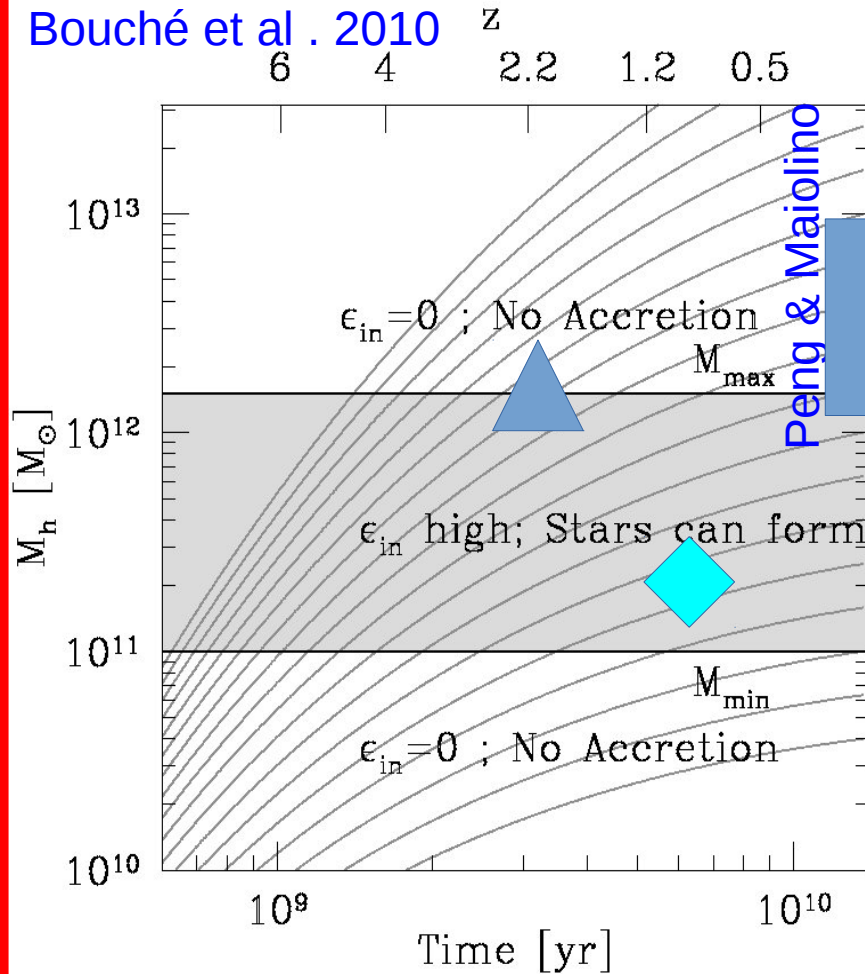


Accretion Efficiency ?

$$\text{SFR} \approx \frac{\epsilon_{\text{in}} f_B}{1 + R + \eta} \dot{M}_{\text{DM}}$$

Behroozi, Wechsler, Conroy. 2013

Bouché et al. 2010



Too steep for feedback ?