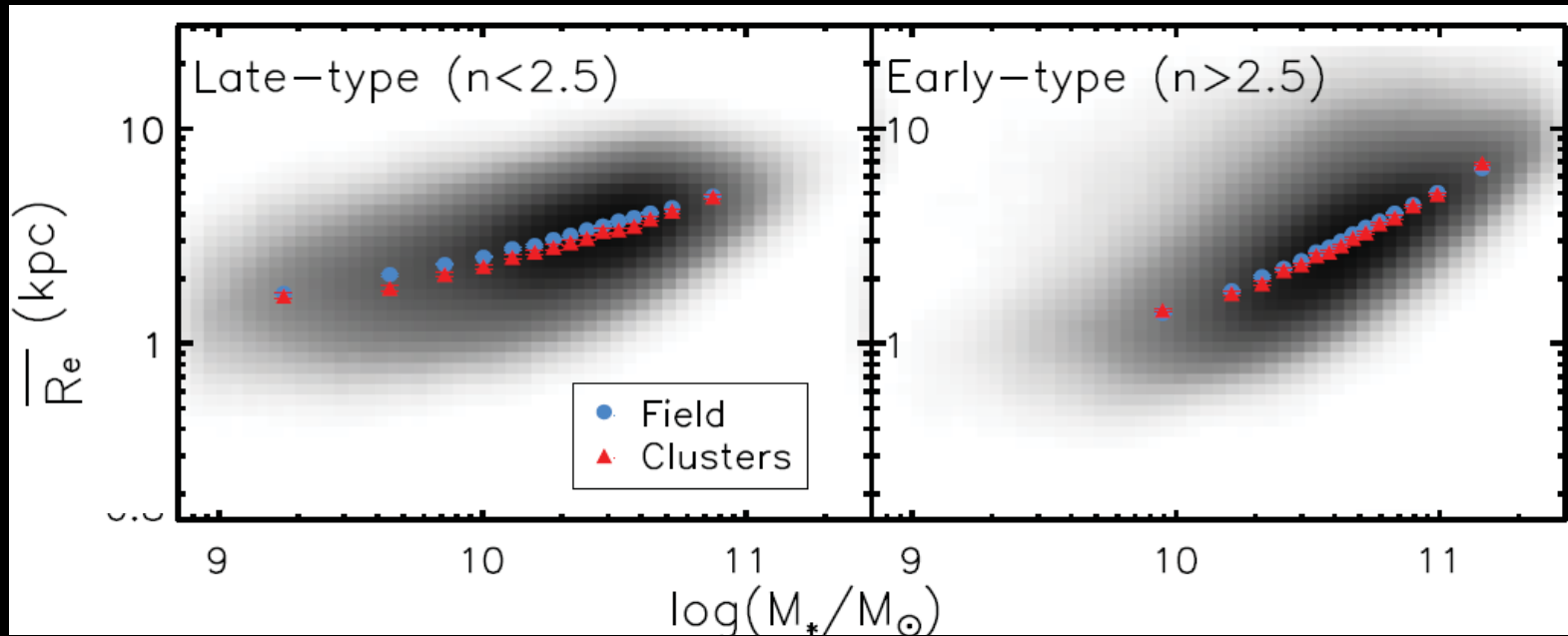


## Q4. Role of Environment



Aperture	Late-type		Early-type	
	$\bar{R}_{\text{field}}/\bar{R}_{\text{clust}}$	$\sigma_{\text{field}}/\sigma_{\text{clust}}$	$\bar{R}_{\text{field}}/\bar{R}_{\text{clust}}$	$\sigma_{\text{field}}/\sigma_{\text{clust}}$
0.5 Mpc	$1.21 \pm 0.03$	$1.04 \pm 0.05$	$1.05 \pm 0.02$	$1.08 \pm 0.03$
1.0 Mpc	$1.13 \pm 0.02$	$1.05 \pm 0.02$	$1.05 \pm 0.01$	$1.08 \pm 0.02$
1.5 Mpc	$1.10 \pm 0.01$	$1.05 \pm 0.02$	$1.046 \pm 0.008$	$1.04 \pm 0.02$
2.0 Mpc	$1.078 \pm 0.006$	$1.002 \pm 0.008$	$1.040 \pm 0.008$	$1.030 \pm 0.009$

The stellar mass – size relation is barely affected by the environment  
(Cebrián & Trujillo 2014)