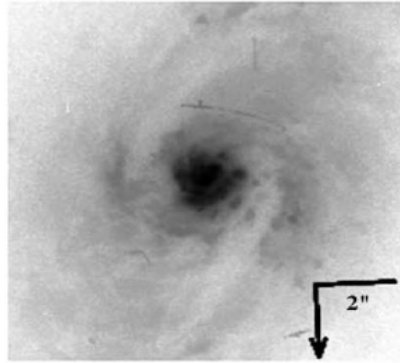
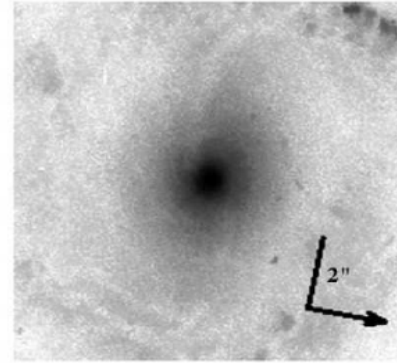


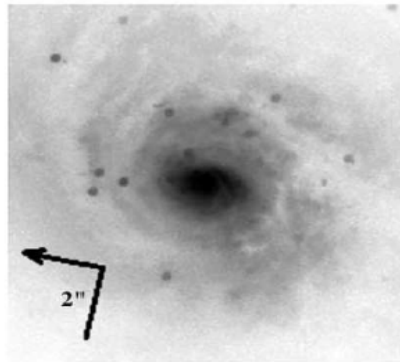
Black holes grow in pseudo-bulges



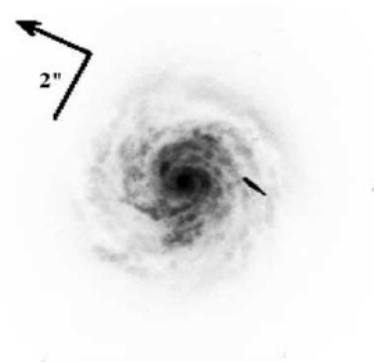
MRK 917 (726 pc/")



MRK 937 (873 pc/")



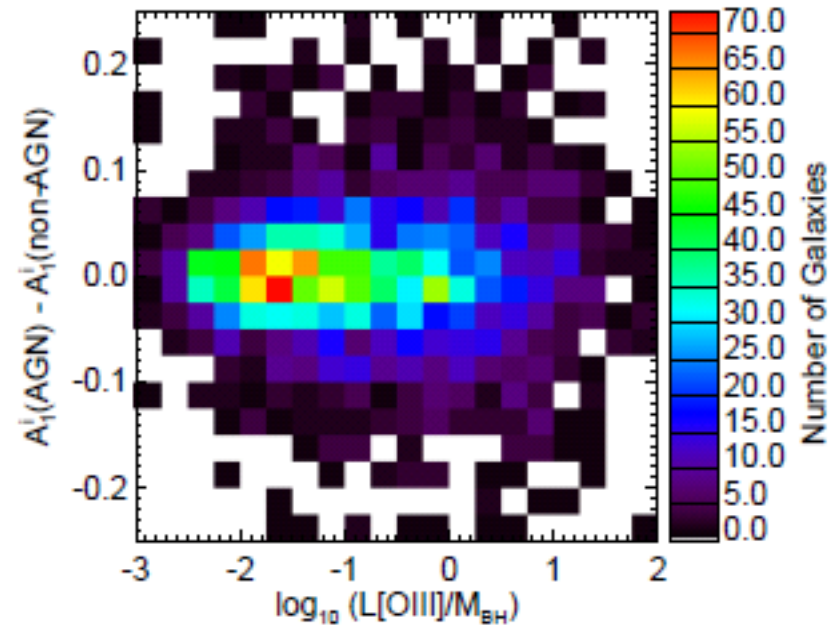
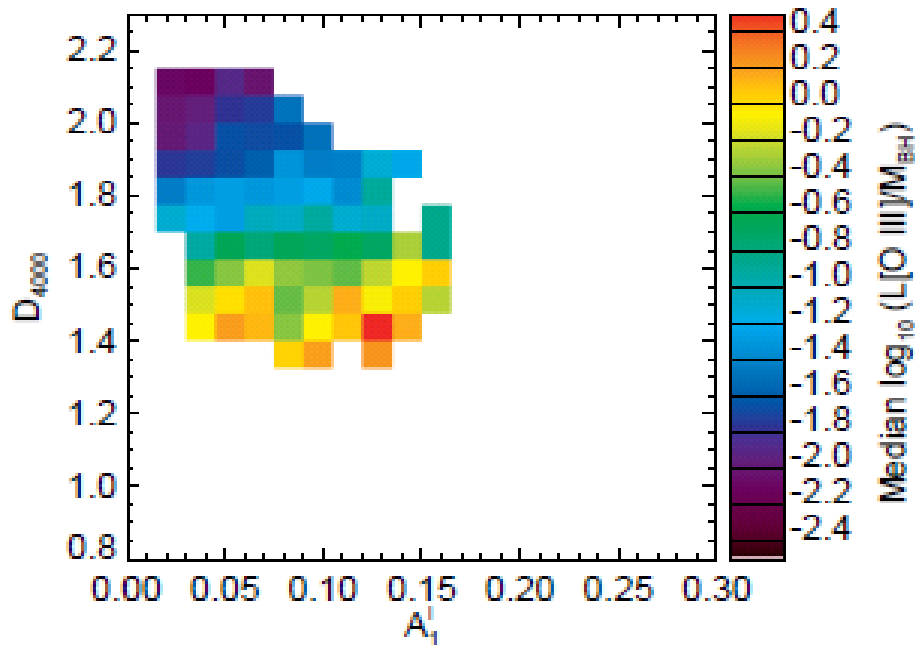
MRK 938 (551 pc/")



MRK 955 (1020 pc/")

HST images show dust lanes and spiral arms (gas and young stars) in 'bulge'

Black hole growth is closely linked with central star-formation. Mergers are a minor driver



- > The primary correlations are between:
 - 1) lopsidedness and star-formation
 - 2) star formation and black hole growth
- > The apparent correlation between lopsidedness and black hole growth is induced (not physical)